

**SKANSKA**

---

The strength of partnership –  
transforming Bristol's schools





# 4,300+

new primary places – and still going



# 300+

new places for children with additional learning needs



Improved schools for

# 13,600+

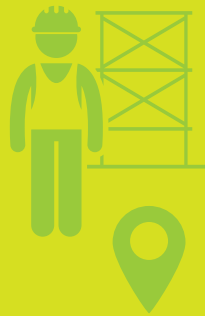
secondary pupils – and still going



Over

# 70%

of construction teams employed locally



# 2,261,718

hours worked on Bristol schools without a reportable accident



# 115%

more students achieving A\*-C in at least five GCSEs



# 0

teaching hours lost due to building activity



Since 2006, Skanska has provided over 4,300\* new primary places in Bristol. We have improved the learning environment for over 13,600 secondary school children and created over 300 new places for children with additional learning needs.

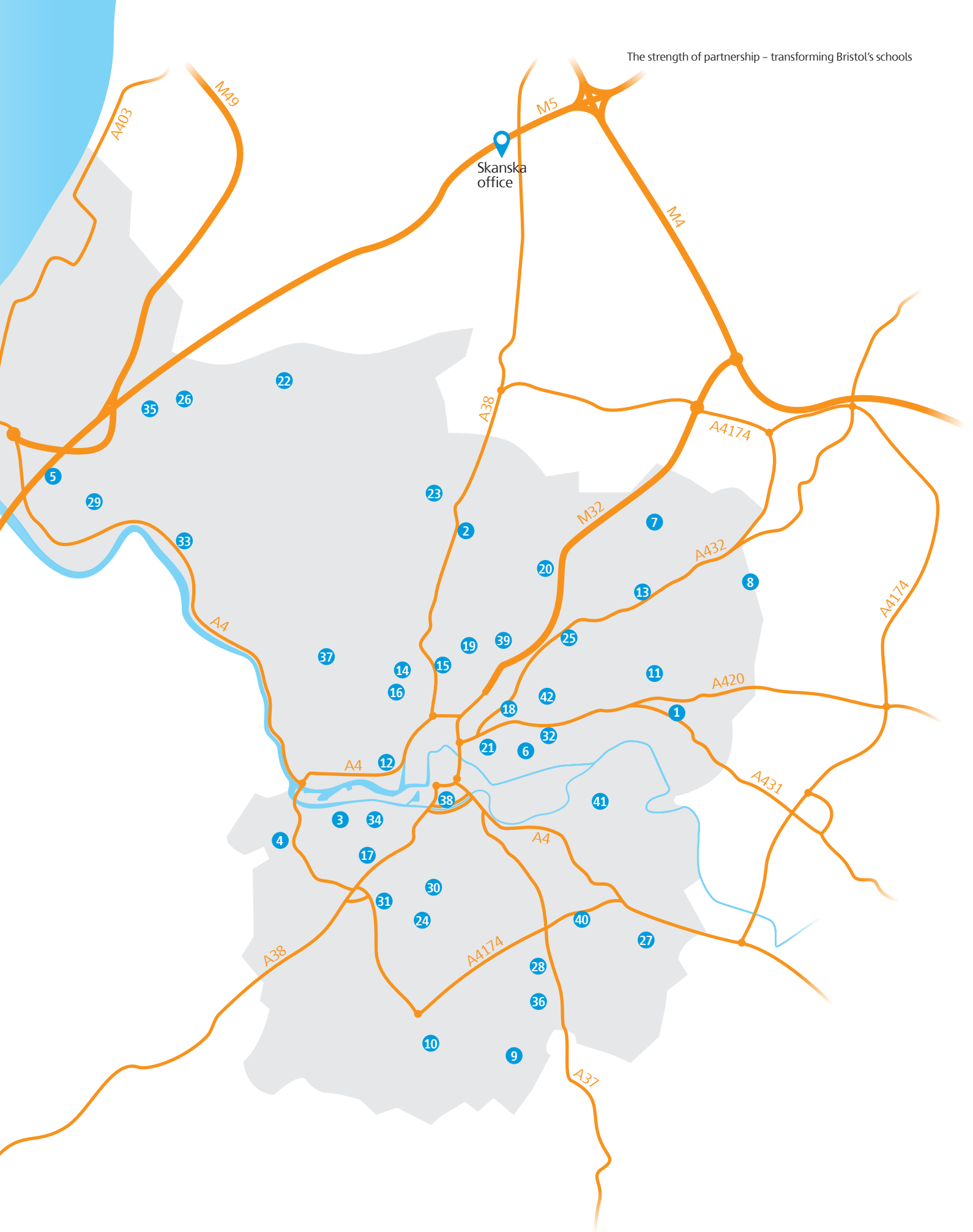
- 1 Air Balloon Hill**  
Primary  
**New-build and refurbishment – see page 16**  
Internal floor area: 1,155 sqm  
New places created: 210  
Contract start: February 2012  
Completion: May 2013
- 2 Ashley Down Primary (Brunel Fields)**  
Primary  
**New-build**  
Internal floor area: 2,011 sqm  
New places created: 210 plus 210 in extension  
Contract start: February 2010  
Completion: November 2010  
Extension site: August 2013
- 3 Ashton Gate**  
Primary  
**Remodelling of old office building**  
Internal floor area: 3,019 sqm  
New places created: 420  
Contract start: November 2014  
Completion (scheduled): August 2015
- 4 Ashton Park**  
Secondary  
**New-build and refurbishment**  
Internal floor area: 5,922 sqm  
Pupils with enhanced learning environment: 1,080  
Contract start: February 2009  
Completion: March 2011
- 5 Avon Primary**  
Primary  
**New-build and refurbishment**  
Internal floor area: 698 sqm  
New places created: 210  
Contract start: November 2013  
Completion: August 2014
- 6 Barton Hill**  
Primary  
**New-build and refurbishment**  
Internal floor area: 360 sqm  
New places created: 90  
Contract start: June 2015 (subject to contract)  
Completion (scheduled): February 2016
- 7 Begbrook Primary Academy**  
Primary  
**New-build and refurbishment**  
Internal floor area: 698 sqm  
New places created: 240  
Contract start: October 2013  
Completion: August 2014
- 8 Briarwood Special School**  
Additional learning needs  
**New-build and refurbishment**  
Internal floor area: 835 sqm  
New places created: 21  
Contract start (scheduled): July 2015  
Completion (scheduled): August 2016
- 9 Bridge Farm**  
Primary  
**New-build and refurbishment**  
Internal floor area: 754 sqm  
New places created: 210  
Contract start: January 2015  
Completion (scheduled): August 2015
- 10 Bridge Learning Campus**  
Primary, secondary and additional learning needs  
**New-build**  
Internal floor area: 14,244 sqm  
Pupils with enhanced learning environment: 1,400  
Contract start: May 2007  
Completion: August 2009
- 11 Bristol Brunel Academy**  
Secondary  
**New-build – see page 17**  
Internal floor area: 13,500 sqm  
Pupils with enhanced learning environment: 1,080  
Contract start: May 2006  
Completion: August 2007
- 12 Bristol Cathedral Choir School**  
Secondary  
**Refurbishment including creation of classrooms, ICT and learning resource centre**  
Internal floor area: 1,434 sqm  
Pupils with enhanced learning environment: 600  
Contract start: February 2010  
Completion: May 2011
- 13 Bristol Metropolitan Academy**  
Secondary  
**New-build**  
Internal floor area: 11,200 sqm  
Pupils with enhanced learning environment: 1,080  
Contract start: September 2006  
Completion: December 2008
- 14 Colston's Primary (Elmgrove site)**  
Primary  
**New-build**  
Internal floor area: 700 sqm  
New places created: 210  
Contract start: October 2014  
Completion (scheduled): August 2015
- 15 Colston Girls**  
Secondary  
**New-build and refurbishment**  
Internal floor area: 3,483 sqm  
Pupils with enhanced learning environment: 700  
Contract start: February 2010  
Completion: September 2011
- 16 Cotham**  
Secondary  
**New block for art, design, technology and science plus refurbishment**  
Internal floor area: 4,240 sqm  
Pupils with enhanced learning environment: 1,080  
Contract start: February 2009  
Completion: March 2011
- 17 Compass Point**  
Primary  
**New-build and refurbishment**  
Internal floor area: 1,720 sqm  
New places created: 210  
Contract start: March 2014  
Completion (scheduled): August 2015
- 18 Easton CE Academy**  
Primary  
**New-build and refurbishment**  
Internal floor area: 1,085 sqm  
New places created: 210  
Contract start: April 2014  
Completion: December 2014
- 19 Fairlawn Road**  
Primary and additional learning needs  
**Refurbishment and remodelling**  
Internal floor area: 420  
New places created: 420  
Contract start: January 2015  
Completion (scheduled): August 2015
- 20 Glenfrome**  
Primary  
**New-build and refurbishment**  
Internal floor area: 662 sqm  
New places created: 210  
Contract start: July 2013  
Completion: May 2014
- 21 Hannah More**  
Primary  
**New-build and refurbishment – see page 9**  
Internal floor area: 1,943 sqm  
New places created: 210  
Contract start: February 2012  
Completion: December 2012

\* Figure excludes projects scheduled for completion in August 2015 and 2016.

- 22 Henbury Court**  
Primary  
**New-build and refurbishment**  
Internal floor area: 164 sqm  
New places created: 65  
Contract start: May 2008  
Completion: September 2009
- 23 Horfield CE VC Primary**  
Primary  
**Two classroom extension**  
Internal floor area: 587 sqm  
New places created: 40  
Contract start: November 2008  
Completion: August 2009
- 24 Knowle DGE**  
Secondary and additional learning needs  
**New-build and remodelling**  
Internal floor area: 4,392 sqm  
New places created: 136  
Contract start: February 2009  
Completion: June 2010
- 25 May Park**  
Primary  
**New-build and refurbishment – see page 8**  
Internal floor area: 1,752 sqm  
New places created: 420  
Contract start: June 2012  
Completion: December 2013
- 26 Oasis Academy Bank Leaze**  
Primary  
**New-build and refurbishment**  
Internal floor area: 1,704 sqm  
New places created:  
Contract start: October 2010  
Completion: September 2011
- 27 Oasis Academy Brislington**  
Secondary  
**New-build**  
Internal floor area: 17,876 sqm  
Pupils with enhanced learning environment: 1,755  
Contract start: September 2006  
Completion: December 2008
- 28 Oasis Academy John Williams**  
Secondary  
**New-build**  
Internal floor area: 9,291 sqm  
Pupils with enhanced learning environment: 1,010  
Contract start: January 2009  
Completion: August 2010
- 29 Oasis Academy Long Cross**  
Primary  
**New-build and refurbishment**  
Internal floor area: 949 sqm  
New places created:  
Contract start: November 2010  
Completion: September 2011
- 30 Oasis Academy Marksbury Road**  
Primary  
**New-build**  
Internal floor area: 2,400 sqm  
New places created: 480  
Contract start: June 2014  
Completion: April 2015
- 31 Parson Street**  
Primary  
**New-build**  
Internal floor area: 839 sqm  
New places created:  
Contract start: July 2010  
Completion: May 2011
- 32 Redfield Educate Together Primary Academy**  
Primary  
**New-build and refurbishment**  
Internal floor area: 2,100 sqm  
New places created: 420  
Contract start: August 2014  
Completion (scheduled): August 2015
- 33 Sea Mills**  
Primary  
**New-build and refurbishment**  
Internal floor area: 1,752 sqm  
New places created: 340  
Contract start: September 2011  
Completion: August 2012
- 34 Southville Primary (Myrtle site)**  
Primary  
**New-build and refurbishment**  
Internal floor area: 1,888 sqm  
New places created: 420  
Contract start: March 2014  
Completion (scheduled): August 2015
- 35 St. Bede's Catholic College**  
Secondary  
**New sports hall and building for design and technology, art, music and drama plus refurbishment**  
Internal floor area: 3,316 sqm  
Pupils with enhanced learning environment: 960  
Contract start: January 2009  
Completion: September 2010
- 36 St. Bernadette Catholic**  
Secondary  
**New building for art, drama and music plus refurbishment**  
Internal floor area: 2,100 sqm  
Pupils with enhanced learning environment: 750  
Contract start: January 2009  
Completion: August 2010
- 37 St John's CE VC (Lower Redland Road site)**  
Primary  
**New-build and refurbishment – see page 14**  
Internal floor area: 517 sqm  
New places created: 210  
Contract start: October 2012  
Completion: August 2013
- 38 St. Mary Redcliffe and Temple**  
Secondary  
**New-build**  
Internal floor area: 8,550 sqm  
Pupils with enhanced learning environment: 1,080  
Contract start: January 2009  
Completion: August 2010
- 39 St. Werburgh's (Silver Birch site)**  
Primary  
**New-build and refurbishment – see page 10**  
Internal floor area: 943 sqm  
New places created: 180  
Contract start: February 2014  
Completion: August 2014
- 40 West Town Lane Academy**  
Primary  
**New-build and refurbishment**  
Internal floor area: 671 sqm  
New places created: 210  
Contract start: July 2013  
Completion: April 2014
- 41 Wicklea Academy**  
Primary  
**New-build**  
Internal floor area: 1,950 sqm  
New places created: 360  
Contract start: September 2013  
Completion: August 2014
- 42 Whitehall**  
Primary  
**New-build**  
Internal floor area: 570 sqm  
New places created: 210  
Contract start (scheduled): July 2015  
Completion (scheduled): September 2016











Pupils at Parson Street Primary in Bedminster, where we provided 210 new places and a range of bright, airy learning spaces

**Front cover:** Two pupils at St Werburgh's Primary enjoying one of the shared spaces Skanska created as part of an extensive refurbishment – see page 10 for more details





**SKANSKA**

Bristol  
Local Education Partnership

## Stronger together

Skanska has been working with Bristol City Council since 2006 through the Bristol Local Education Partnership (LEP).

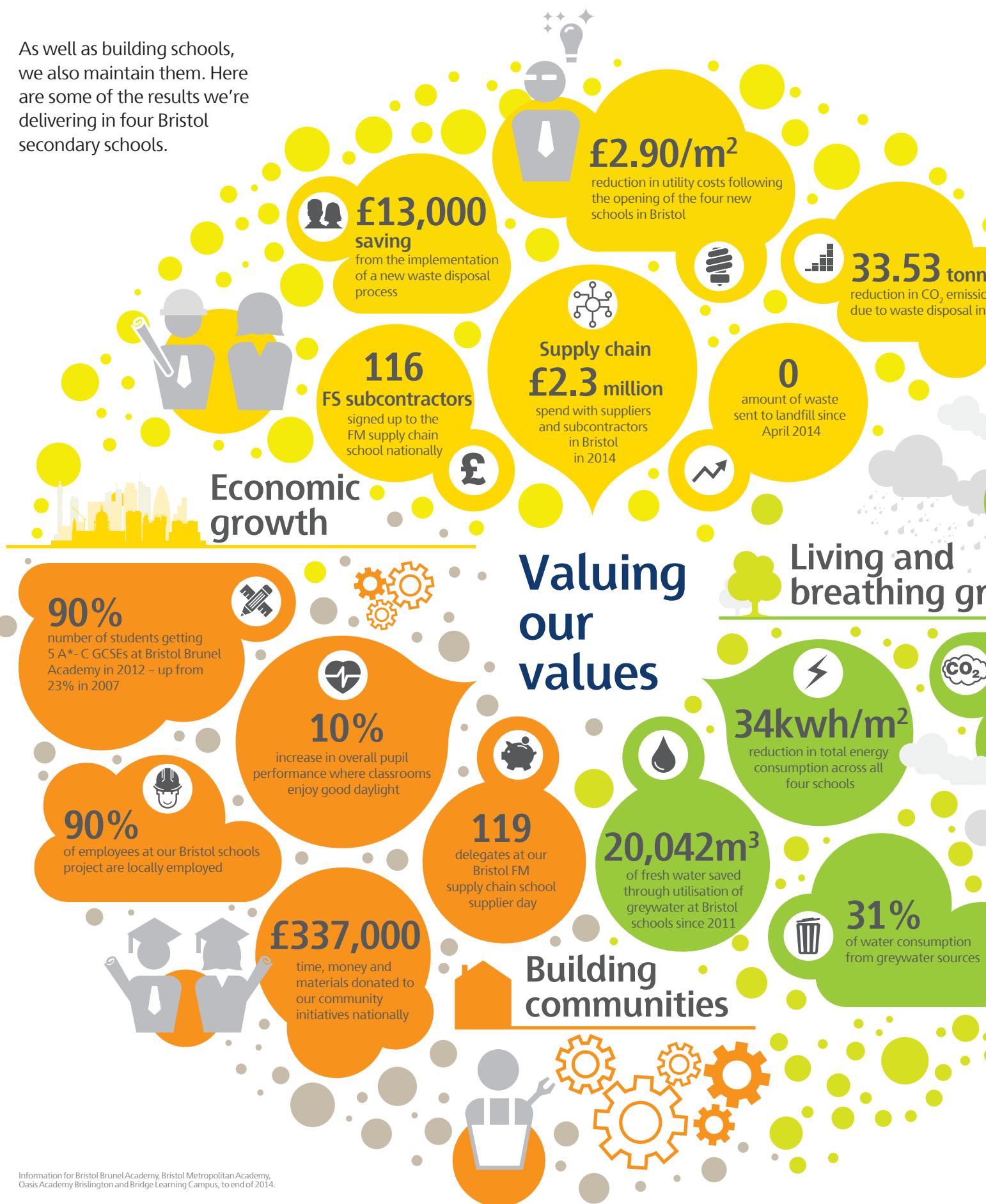
During that time, we've provided over 4,300 new primary school places and improved the learning environment for over 13,600 secondary school children. There are also over 300 new places for children with additional learning needs. And that's not counting the projects set to finish this year and next.

We've brought innovation and cutting-edge sustainable technology to revitalise existing buildings and construct new schools.

The key is collaboration with everyone involved in a school project, working together to provide Bristol with the school places and modern facilities it needs.



As well as building schools, we also maintain them. Here are some of the results we're delivering in four Bristol secondary schools.





## A collaborative approach

A pupil at St. Werburgh's Primary enjoys a maths lesson – see page 10 for more details on our refurbishment of the school

Our award-winning success is down to teamwork.

On each project, we work with teachers, parents and neighbours to understand what's best for the school and how to make the most of each site.

Wherever possible, we work with Bristol-based designers. We're building schools for the communities they live in, so they care as much as us about getting it right. We then prioritise the local supply chain to deliver the work.

When building inside operational schools, we don't disrupt teaching time. Instead, we take the opportunity to talk with pupils about the construction process, and act as ambassadors for STEM subjects – science, technology, engineering and maths.

We know that sustainable buildings offer healthier environments as well as cut costs, so we build to some of the highest 'green' standards.

Our innovative construction techniques mean that many schools have also kept their treasured green spaces.

es  
ons  
2014

reen

**778 tonnes**  
of CO<sub>2</sub> saved between  
2011–2014 through  
biomass consumption  
over traditional boilers



Project profile:

## Straw bale buildings help cut energy use in half

### Skanska innovation

We worked with Natural England to protect a badger colony and create an enhanced woodland habitat.



### May Park Primary

A farmer's barn near Bristol might not be the first place you'd expect to find cutting-edge technology.

It was here that we created a 'flying factory', producing the prefabricated straw bale and timber wall segments for May Park. Skanska led a multi-agency research team to develop and implement this innovative technique. The children pitched in too, helping to pack straw into the wall panels.

We also added solar panels to the roof which generate in excess of 20% of the school's annual electricity requirement. A display in reception provides real-time information on the energy they produce – a graphic indication of the benefit the panels deliver.

These are just two of the initiatives helping May Park to use around half the energy and water of a similarly sized UK school.

**Top:** Closer inspection of the raw material  
**Inset:** May Park pupils visit our farm factory to discover more about straw bale technology





Project profile:

## Playing fields saved with new rooftop classrooms

### Hannah More Primary

Back in early 2012, the school was full to bursting. It needed to double its capacity in time for the new school year and the obvious solution was to build on its much-loved playing fields.

We devised a simple and effective solution by putting six new modular classrooms on the reinforced roof.

Each classroom was built off-site then installed by crane. This cut costs, minimised waste and allowed the school to remain fully functional throughout the work.

A high-level mezzanine walkway around the original hall provides access points for the classrooms and a new heart for the whole school.

Most important of all, the playing fields remain intact, to be enjoyed by pupils for many years to come.

### Skanska innovation

We minimised disruption by taking our breaks and lunchtimes at the same time as the children.



**Inset top:** An aerial shot showing the school buildings bottom right with adjacent playing fields

**Middle:** Hannah More's exterior, showing the new roof-mounted classrooms

**Inset bottom:** The school's interior mezzanine walkway





Reinstated stained glass windows bring light and colour to refurbished classrooms





Project profile:

## Hidden gems revealed in a sympathetic refurbishment

### St. Werburgh's Primary

School design and approaches to learning have progressed significantly in the 100 years since St. Werburgh's was built. When we began refurbishing the school's interior, we could see it needed more than a lick of paint.

We reconfigured the layout to create more space and built shared spaces for each year group, including an area outside the classroom for art and 'messy play'.

Hanging ceilings were removed to reveal original feature windows kept hidden for years. New stained glass designs create an eye-catching feature.

Outside, the new-build element is clad in sustainably sourced timber. Careful detailing ensures old and new complement each other.



#### Skanska innovation

We used contractors with traditional woodworking skills to renovate the school's timber joists.

**Above:** Playtime fun in the landscaped exterior space  
**Top:** One of the school's new bright shared leaning spaces  
**Middle:** Sustainably sourced timber on the school's new-build exterior





One of the bright learning spaces we created at Glenfome Primary as part of a major refurbishment





"The children, parents and staff **absolutely love** (the new Silver Birch annexe) and every day parents and children stop me to express their thanks and pleasure at the **fantastic provision** that is available to them now in their community."

Claire Banks, Head Teacher, St. Werburgh's Primary School



"Our new building is already having a **positive impact** on our students and staff. Learning in such an outstanding building inspires you to try harder. We have noticed our students are relishing the new opportunities this **exciting building** offers them."

Chris Gardner, Head Teacher, Ashton Park School



"Working with Skanska has been **very successful** for us. Skanska have been flexible with that working relationship and we have had to work hard to overcome many of the difficulties of working within an ancient site."

Neil Blundell, Principal, Bristol Cathedral Choir School



"I cannot praise the site management highly enough for their **commitment** and success in delivering the build in time alongside 500 children. Everyone is **thrilled** with the quality of the finished product."

Duncan Cruikshank, Principal, Begbrook Primary



"I have been **constantly impressed** by the attention to detail, the ability to work round problems, the safety levels for the workers and the cheerfulness of all on site. I have **enjoyed my Skanska experience** and I am grateful for all that has been done."

Rob Worsfold, Head Teacher, Air Balloon Hill Primary School





Project profile:

## Creating a new school building from an old police station

### Skanska innovation

A number of the station's cells have been refashioned into a school library.



### St John's Primary

Following an extensive refurbishment, Redland Police Station was transformed into a new annexe for St John's Primary. Six new classrooms, a kitchen and meeting rooms have replaced the building's cells and offices and the school is brimming with state-of-the-art IT equipment.

A number of features were retained, including period tiles in the reception and corridors, an iron door from an old cell and original windows. Extensive landscaping work created new play spaces, replacing an old social club.

**Top inset:** Maintaining sympathy with the original building – the school's exterior

**Middle:** Floor-to-ceiling windows maximise available daylight

**Bottom inset:** The school's library with original tiling from its previous life as a cell

Close liaison with the local Civic Society ensured our award-winning work remained sympathetic to the original building, while creating a bright and welcoming learning space for pupils.





Redland & Cotham Amenities Society

**Gold and Green Star Awards  
2014**

*This Gold and Green Star Certificate  
is awarded to*

*St. John's Primary School*

*Skanika  
Project management and construction*

*Stride Treglown  
Architects*

*For the new school premises in  
Lower Redland Road, Redland.*

*Ben Wallace* **R&C** *Secretary*

Inset: The award certificate we received from Redland and Cotham Amenities Society  
Main: Pupils at St John's Primary work on their own construction projects





Project profile:

## Working with the community as a considerate constructor

### Skanska innovation

Residents living on the site's single access route had their cars washed regularly and received chocolates at Christmas.



### Air Balloon Hill Primary

We understand that construction can be unsettling, so we always work hard to be a good neighbour.

Air Balloon Hill is in the heart of a residential community. Newsletter updates and regular meetings helped us stay in touch.

We worked closely with teachers and pupils, hosting assemblies and site visits as well as providing ideas for including the building process in the curriculum.

Even the local wildlife was engaged. Our construction programme took account of the nesting season and new bird and bat boxes were installed on trees.

Access to a new sports facility is safer too. Previously unused land now offers an access path so pupils no longer have to use the main road.

**Above:** The school's raised walkway and landscaping

**Inset:** Exterior wooden walkways at Air Balloon's rear



Project profile:

## Sustainable design, right from the start

### Bristol Brunel Academy

We built four secondary schools in Bristol under Wave 1 of Building Schools for the Future (BSF). The first, the 1,080-place Brunel Academy, was opened by Prime Minister Gordon Brown in October 2007, saying it offered the “opportunity for every one of its children to have the best possible start in life.”

Sustainable development was at the heart of BSF and Brunel embodies many of the features we built into later schools.

Natural ventilation avoids the use of energy-intensive air conditioning and the lights switch off automatically if a room is empty. The design maximises natural daylight to enhance the pupils' learning environment.

Biomass boilers generate 80% of the school's heating requirements and the water for toilet flushes come entirely from a rainwater harvesting system.

#### Skanska innovation

Pupils, teachers, contractors, staff and designers all added their wishes to a stone installation in the school's reception.



**Above:** The school's Wishing Wall in its reception area

**Inset:** Naturally ventilated – the school's main thoroughfare





# Part of the community

For us, a school is much more than a building.

We involve the school community right from the beginning of a project. We invite pupils and teachers to visit our sites so they can see their new school being built. Once the school is open, we often return to help the children with their maths or English projects, or to talk with them about careers in construction.

As part of a history project, Horfield CE VC Primary pupils created a time capsule to be discovered by future generations, which we buried in the foundations of their new school



A Skanska volunteer team helps pupils at Oasis Academy Long Cross build an allotment garden so they can grow their own vegetables



Project manager Tim Smith and Considerate Constructors' mascot Ivor Goodsite talk to pupils at Oasis Academy Long Cross, about how we build buildings and stay safe while doing it



A Skanska team joins pupils from Colston's Primary School to plant three varieties of rare trees as part of the Tree for Every Child scheme



**BRISTOL**  
2015 EUROPEAN  
GREEN CAPITAL

## Proud to sponsor European Green Capital 2015

When Bristol became the first UK city to be awarded the status of European Green Capital it was natural for Skanska to become involved.

With its focus on education and a long-term green legacy, this year-long celebration of sustainable living is a perfect fit for us.

We've been building and investing in sustainable buildings and infrastructure in Bristol for many years, bringing our green expertise and values to the city. Nowhere is this clearer than in our schools work, where sustainability sits at the heart of everything we do.

Skanska's support for Bristol 2015 is central to the delivery of a range of initiatives, activities and projects throughout this year and those to come. For us, this is an opportunity to make a direct contribution to help a great city become a more sustainable place to live, work, learn and play. Creating a positive legacy from Bristol's period as 2015 European Green Capital is essential for the city, its people and our planet.

"In the future, cities will only be one colour, and that's green. As a global company, Skanska is keen to share the sustainability expertise we have gained around the world to support Bristol in achieving its ambitious aims."

**Above:** Skanska's electric car  
**Inset:** Skanska takes part in Bristol 2015's Green Youth Day in April – young people join in our debate about future cities





Join our  
Journey to  
Deep  
Green™



## Green

Skanska is known as one of the world's leading green contractors and developers, with many awards to prove it.

We want to make a positive contribution to society, so we embrace green across our development, construction and maintenance activities. That means doing more while using fewer resources, and thinking about the environmental consequences of everything we do.

The ultimate aim on our Journey to Deep Green™ is for all Skanska projects to have a near-zero impact on the environment – we believe this is a realistic goal.

We're getting there by incorporating ever-more sustainable technology, products and processes into our projects, and by supporting a greener approach. We have launched a range of initiatives including the Green Fund, where we provide our teams with capital to invest in green solutions that are attractive to our clients. Another example is the Supply Chain Sustainability School which helps our suppliers stay safe, be greener and become more efficient in everything they do.

SUPPLY CHAIN SUSTAINABILITY  
**SCHOOL**





## Safer. Healthier Happier.

For us, health and safety is about creating a culture where we look after each other. Life is to enjoy, at work and at home, so we encourage a healthy balance.

Looking after mind and body is part of that. Exercise, rest and a good diet all contribute to a healthy body and a positive mental attitude.

We encourage people to think safety first – work safely or not at all. Our target is zero accidents, so that every person who works for Skanska, including those in our supply chain, returns home safely at the end of the working day.

**Far left:** A biomass boiler on-site at Skanska's UK headquarters

**Left:** Smiling – and safe





## People

Lots of different types of people join the Skanska family for lots of different reasons – exciting projects, great colleagues and the opportunity to improve the environment around them.

Our people come from the communities where we work. With each project, we work hard to support those communities, from job opportunities to local volunteering with schools and charities.

As well as school leavers and graduates looking for their first job, and experienced professionals developing their careers, our workforce is home to people from the forces, young offenders and parents returning to work.

By valuing a diverse range of ideas and experience in our people, we believe we are better able to meet the challenges of the future.

## Ethics

Reputation is everything, so our aim is to be known as an industry leader in ethics.

When people think about Skanska, we want them to think of us as trustworthy, honest and transparent. That means being known for our resolute commitment to doing the right thing, everywhere we work.

We stay mindful of who we work with and on which projects. We expect the people who work with us to meet high ethical standards as well, with the same level of integrity and honesty.

Our strong code of conduct helps us to keep this at the front of our minds, ensuring we always act responsibly and we remain role models for Skanska and our industry.

**Above:** Part of the Skanska family





The strength of partnership – transforming Bristol's schools

Pupils at Glenfrome Primary where we delivered an extra 210 pupil places



# SKANSKA

---

## Skanska UK

240 Park Avenue  
Aztec West  
Almondsbury  
Bristol  
BS32 4SY

📞 +44 (0)1923 776666

✉️ south.west@skanska.co.uk

 skanska.co.uk

 linkedin.com/company/skanska

 twitter.com/skanskaukplc

 youtube.com/skanskauk

